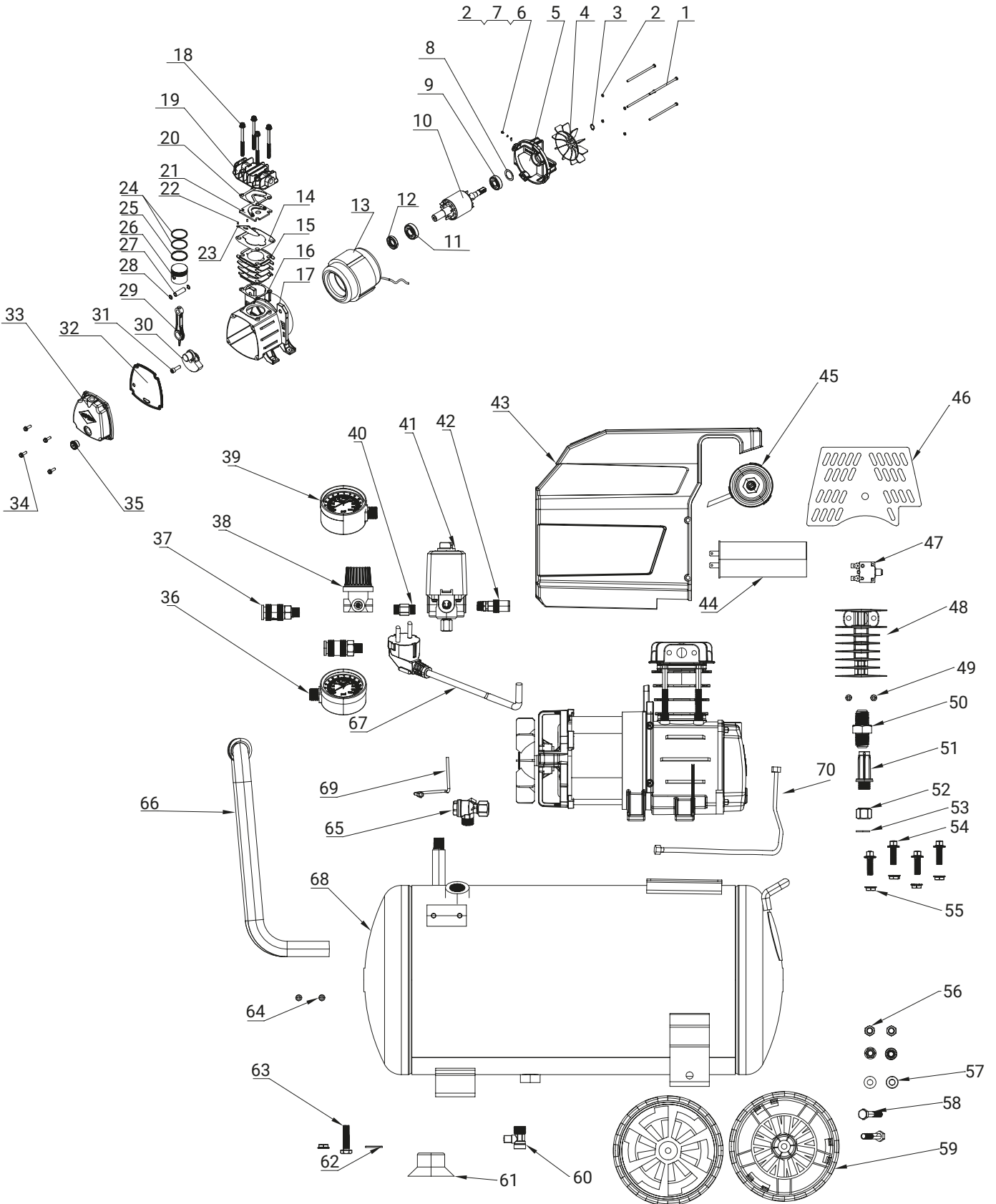




TECHNICAL DRAWING  
HL 260-25

REF. NO.: 36871



**36871 PART LIST**

REF. NO.: 36871

| NO. | Designation                     | Code SKU | Qty |
|-----|---------------------------------|----------|-----|
| 1   | Screw M5*105                    |          | 4   |
| 2   | Washer $\Phi$ 5                 |          | 5   |
| 3   | External clamp $\Phi$ 14        |          | 1   |
| 4   | Fan                             | 36871004 | 1   |
| 5   | Bracket                         |          | 1   |
| 6   | Screw M5*8                      |          | 1   |
| 7   | Tooth shaped pad $\Phi$ 5       |          | 1   |
| 8   | Wave shaped pad 202             |          | 1   |
| 9   | 6202 bearing                    |          | 1   |
| 10  | Rotor                           |          | 1   |
| 11  | 6204 bearing                    |          | 1   |
| 12  | Oil seal $\Phi$ 20* $\Phi$ 40*7 |          | 1   |
| 13  | Motor                           |          | 1   |
| 14  | Valve plate gasket              | 36843005 | 1   |
| 15  | Cylinder                        | 36871015 | 1   |
| 16  | Cylinder gasket                 | 36871016 | 1   |
| 17  | Crankcase                       |          | 1   |
| 18  | M6*55 screw                     |          | 1   |
| 19  | Cylinder head                   | 36871019 | 1   |
| 20  | Cylinder head gasket            | 36871020 | 1   |
| 21  | Valve plate                     | 36843004 | 1   |
| 22  | Locating pin                    |          | 2   |
| 23  | Valve piece                     | 36843006 | 1   |
| 24  | Gas ring                        | 36843010 | 2   |
| 25  | Oil ring                        | 36843011 | 1   |
| 26  | $\Phi$ 48*21*35.5 Pistion       | 36843012 | 1   |
| 27  | $\Phi$ 12*39 piston pin         | 36843013 | 1   |
| 28  | External clamp $\phi$ 12        |          | 2   |

**36871 PART LIST**

REF. NO.: 36871

| NO. | Designation                      | Code SKU | Qty |
|-----|----------------------------------|----------|-----|
| 29  | Φ12*φ20*89 connecting rod        | 36871029 | 1   |
| 30  | Φ20*φ20*20 crank                 | 36871030 | 1   |
| 31  | Screw m8*22                      |          | 1   |
| 32  | Oil baffle                       | 36871032 | 1   |
| 33  | Crackcase cover                  | 36871033 | 1   |
| 34  | M6*20 screw                      |          | 4   |
| 35  | G1/2 oil gauge                   | 36744026 | 1   |
| 36  | Φ60 r1/4 gauage (right)          | 36871036 | 1   |
| 37  | Quick coupler                    | 36871037 | 2   |
| 38  | Regulator                        | 36871038 | 1   |
| 39  | Φ60 r1/4 gauage (left)           | 36871039 | 1   |
| 40  | Zg1/4-zg1/4 connector            | 37511    | 1   |
| 41  | Lf19-4h pressure switch          | 36320    | 1   |
| 42  | Safety valve                     | 363814   | 1   |
| 43  | Cover                            | 36871043 | 1   |
| 44  | Cbb60/35uf/450vac m8 capacitance | 36840041 | 1   |
| 45  | Zg3/8 metal air filter           | 36843039 | 1   |
| 46  | Capacitive barrier               |          | 1   |
| 47  | Protector 10a                    | 36871047 | 1   |
| 48  | Air cooler                       | 36871048 | 1   |
| 49  | M6*20 screw                      |          | 1   |
| 50  | Zg3/8-zg3/8 connector            | 37512    | 1   |
| 51  | Oil plug m16*1.5                 | 36888050 | 1   |
| 52  | Φ10-g3/8 screw                   |          | 2   |
| 53  | Φ10.5*Φ14*1.2 Gasket             |          | 2   |
| 54  | Anti slip toothed nut m8*25      |          | 4   |
| 55  | Anti slip toothed nut m8         |          | 7   |
| 56  | M8 nut                           |          | 2   |

**36871 PART LIST**

REF. NO.: 36871

| NO. | Designation                      | Code SKU | Qty |
|-----|----------------------------------|----------|-----|
| 57  | Φ8*φ17*1.5 Gasket                |          | 2   |
| 58  | M8*43 screw                      |          | 2   |
| 59  | 5' Wheel                         | 36871059 | 2   |
| 60  | 3/8 Drain valve                  | 4336303  | 1   |
| 61  | Horn pad                         | 36871061 | 1   |
| 62  | Φ8*φ24 *2.0 Gasket               |          | 1   |
| 63  | Screw m8*30                      |          | 1   |
| 64  | Screw m6*10                      |          | 4   |
| 65  | ZG1/2-G3/8-M10*1 singel valve    | 36871065 | 1   |
| 66  | Complete handle                  | 36871066 | 1   |
| 67  | Power cable                      |          | 1   |
| 68  | Tank                             | 36871068 | 1   |
| 69  | Discharge pipe                   | 36871069 | 1   |
| 70  | Delivery pipe                    | 36871070 | 1   |
|     | Complete pump                    | 368710U  | 1   |
|     | Complete set of wheels with feet | 368710WS | 1   |